

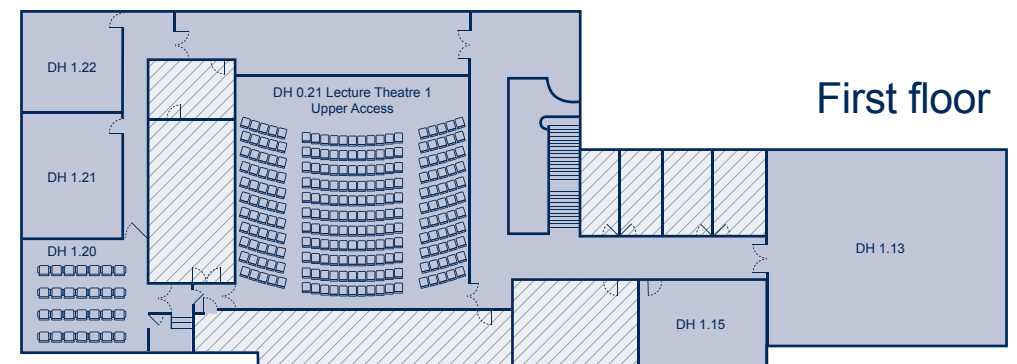
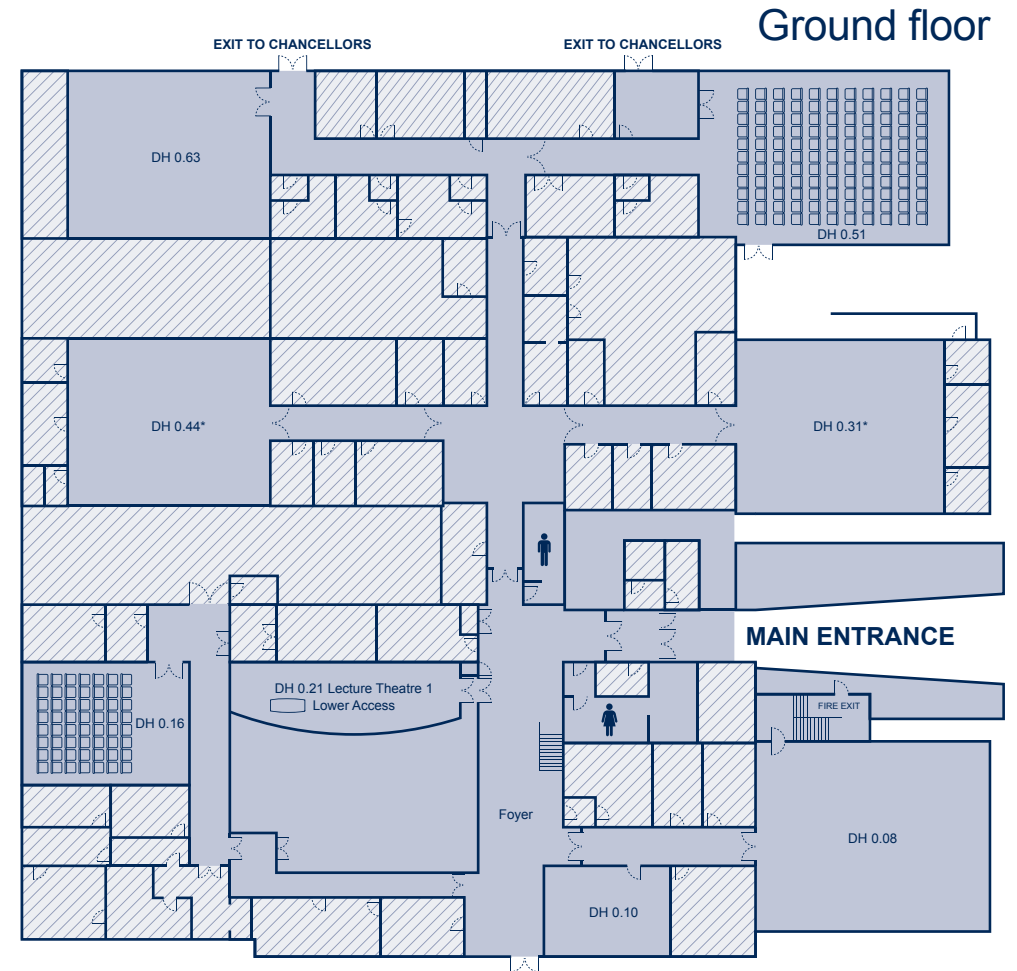
# Dorothy Hodgkin

## room facilities

- Flipchart
- LCD projector
- Laptop/ PC
- Video/ DVD

**Additional audio visual equipment is available on request.**

\* Subject to availability, room can be requested



# Dorothy Hodgkin

Room Number	Ceiling height/ m	Dimensions/ m	Theatre	Hollow square	U-shape with tables	Classroom	Cabaret	Boardroom
DH 0.08	3.2	12.9 x 10.4	n/a	n/a	n/a	96	72	44
DH 0.10	3.2	7.3 x 4.4	n/a	n/a	n/a	22	18	14
DH 0.16 (LT2)	3.2	7.12 x 9.4	65 Fixed	n/a	n/a	n/a	n/a	n/a
DH 0.21 (LT1)	4.5	13.4 x 13.9	226 Fixed	n/a	n/a	n/a	n/a	n/a
DH 0.51	3.2	9.7 x 14.5	152 Fixed	n/a	n/a	n/a	n/a	n/a
DH 0.63	3.2	11.9 x 9.5	100	30	25	80	48	24
DH 0.31*	3.2	8 x 11.89	60	30	25	48	24	20
DH 0.44*	3.2	8 x 11.89	60	30	25	48	24	20
DH 1.20	3.2	6 x 5.4	30 Fixed	n/a	n/a	n/a	n/a	n/a
DH 1.21	3.2	6 x 7.5	24	20	18	18	18	16
DH 1.22	3.2	7.3 x 6.3	16	n/a	n/a	n/a	n/a	n/a
DH 1.13	2.8	13 x 9.7	80	35	35	80	35	35
DH 1.15	2.97	7.05 x 4.25	16	16	16	16	18	16

